

1. IDENTIFICATION OF THE SUBSTANCE/MIXTURE AND OF THE COMPANY/UNDERTAKING

1.1 Product Identifier

Chemical Name 2-Acetyl-1-pyrroline-d4 (10% w/w in DCM)

Catalogue # A187653

1.2 Relevant Identified Uses of the Substance or Mixture and Uses Advised Against

Product Uses To be used only for scientific research and development. Not for use in humans or animals.

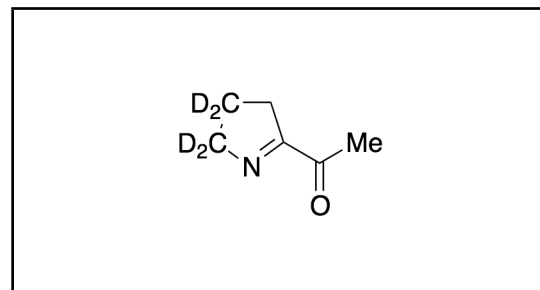
1.3 Details of the Supplier of the Safety Data Sheet

Company Toronto Research Chemicals
2 Brisbane Road
Toronto, ON M3J 2J8
CANADA

Telephone +14166659696

FAX +14166654439

Email orders@trc-canada.com



1.4 Emergency Telephone Number

Emergency# +14166659696 between 0800-1700 (GMT-5)

2. HAZARDS IDENTIFICATION

WHMIS Classification (Canada)

- D1B Toxic Material Causing Immediate and Serious Toxic Effects
Toxic by Ingestion
- D2A Very Toxic Material Causing Other Toxic Effects
Carcinogen
- D2B Toxic Material Causing Other Toxic Effects
Moderate Skin/Eye Irritant

WHMIS Symbols (Canada)



2.1/2.2 Classification of the Substance or Mixture and Label Elements

GHS Hazards Classification (According to EU Regulation 1272/2008 and US OSHA 1910.1200)

Acute Toxicity, Oral (Category 4)

Skin Irritation (Category 2)

Serious Eye Irritation (Category 2)

Carcinogenicity (Category 2)

EU Classification (According to EU Regulation 67/548/EEC)

Irritating to eyes and skin. Harmful if swallowed. May cause cancer.

EU Risk and Safety Statements (According to EU Regulation 67/548/EEC)

Hazard Statements	Hazard Codes
Toxic	T
Irritant	Xi



Risk Codes and Phrases

R36/38 Irritating to eyes and skin.

R22 Harmful if swallowed.

R45 May cause cancer.

Safety Precaution Codes and Phrases

S22 Do not breathe dust.

S37/39 Wear suitable gloves and eye/face protection.
S46 If swallowed, seek medical advice immediately and show this container or label.
S53 Avoid exposure - obtain special instruction before use.

GHS Hazards Identification (According to EU Regulation 1272/2008 and US OSHA 1910.1200)

Signal Word Warning



GHS Hazard Statements

H302 Harmful if swallowed.
H315 Causes skin irritation.
H319 Causes serious eye irritation.
H351 Suspected of causing cancer.

GHS Precautionary Statements

P280 Wear protective gloves/protective clothing/eye protection/face protection.
P201 Obtain special instructions before use.
P261 Avoid breathing dust/fume/gas/mist/vapours/spray.
P301/P312 IF SWALLOWED: Call a POISON CENTER or doctor/physician if you feel unwell.
P305/P351/P338 IF IN EYES: Rinse cautiously with water for several minutes. Remove contact lenses, if present and easy to do. Continue rinsing.

2.3 Unclassified Hazards/Hazards Not Otherwise Classified

No data available

3. COMPOSITION/INFORMATION ON INGREDIENTS

3.1 Substances

Molecular Formula: C₆H₅D₄NO

Molecular Weight: 115.17

CAS Registry #:

EC#:

Synonyms

1-(3,4-Dihydro-2H-pyrrol-5-yl)ethanone-d₄; 2-Acetyl-4,5-dihydro-3H-pyrrole-d₄;

3.2 Mixtures

Ingredient	CAS#	EC#	Index-No.	%Composition
Methylene Chloride	75-09-2	200-838-9	602-004-00-3	90%
2-Acetyl-1-pyrroline-d ₄	N/A N/A	N/A		10%

4. FIRST AID MEASURES

4.1 Description of First Aid Measures

General Advice

If medical attention is required, show this safety data sheet to the doctor.

If Inhaled

If inhaled, move casualty to fresh air. If not breathing, give artificial respiration and consult a physician.

In Case of Skin Contact

Wash affected area with soap and water. Consult a physician if any exposure symptoms are observed.

In Case of Eye Contact

Immediately rinse eyes with plenty of water for at least 15 minutes. Consult a physician.

If Swallowed

Never give anything by mouth to an unconscious person. Rinse mouth with water. Do NOT induce vomiting unless advised to do so by a physician or Poison Control Center. Seek medical attention.

4.2 Most Important Symptoms and Effects, Both Acute and Delayed

No data available

4.3 Indication of any Immediate Medical Attention and Special Treatment Needed

No data available

5. FIREFIGHTING MEASURES

5.1 Extinguishing Media

Suitable Extinguishing Media

Use water spray, alcohol-resistant foam, dry chemical or carbon dioxide.

5.2 Special Hazards Arising from the Substance or Mixture

Carbon oxides, Nitrogen oxides

5.3 Advice for Firefighters

Wear self contained breathing apparatus for fire fighting if necessary.

5.4 Further Information

No data available

6. ACCIDENTAL RELEASE MEASURES

6.1 Personal Precautions, Protective Equipment and Emergency Procedures

Use recommended personal protective equipment (see Section 8). Prevent the formation of dusts and mists. Adequate ventilation must be provided to ensure dusts or mists are not inhaled.

6.2 Environmental Precautions

Material should not be allowed to enter the environment. Prevent further spillage or discharge into drains, if safe to do so.

6.3 Methods and Materials for Containment and Cleaning Up

Contain the spill and then collect using non-combustible absorbent material (such as clay, diatomaceous earth, vermiculite or other appropriate material). Place material in a suitable, sealable container and then dispose according to local/national regulations and guidance (see Section 13).

For protective equipment, refer to Section 8. For disposal, see Section 13.

7. HANDLING AND STORAGE

7.1 Precautions for Safe Handling

Avoid contact with skin and eyes. Ventilation and proper handling are to be used to prevent the formation of dusts and mists. Normal measures for preventative fire protection. No smoking, eating or drinking around this material. Wash hands after use.

7.2 Conditions for Safe Storage, Including any Incompatibilities

Ensure container is kept securely closed before and after use. Keep in a well ventilated area and do not store with strong oxidizers or other incompatible materials (see Section 10).

Storage conditions: No Data Available

7.3 Specific End Uses

For scientific research and development only. Not for use in humans or animals.

8. EXPOSURE CONTROLS/PERSONAL PROTECTION

8.1 Control Parameters

Components with workplace exposure levels

Component	CAS#	Value	Control Parameters	Basis
Dichloromethane	75-09-2	TWA	50 ppm 175 mg/m ³	Canada. Alberta, Occupational Health and Safety Code (table 2: OEL)
		TWA	25 ppm	Canada. British Columbia OEL
		TWA	50 ppm	USA. ACGIH Threshold Limit Values (TLV)

8.2 Exposure Controls

Appropriate Engineering Controls

A laboratory fumehood or other appropriate form of local exhaust ventilation should be used to avoid exposure.

Personal Protective Equipment

All recommendations below are advisory in nature and a risk assessment should be performed by the employer/end user prior to use of this product. The type of protective equipment must be selected based on the amount and concentration of the dangerous material being used in the workplace.

Eye/Face Protection

Safety glasses or safety goggles. All equipment should have been tested and approved under appropriate standards,

such as NIOSH (US), CSA (Canada), or EN 166 (EU).

Skin Protection

Gloves should be used when handling this material. Gloves are to be inspected prior to use. Contaminated gloves are to be removed using proper glove removal technique so that the outer surface of the glove does not contact bare skin. Dispose of contaminated gloves after use in compliance with good laboratory practices and local requirements.

Gloves used for incidental exposures (splash protection) should be designated as "low chemical resistant" or "waterproof" by EU standard EN 374. Unrated gloves are not recommended.

Suggested gloves: AnsellPro nitrile gloves style 92-500 or 92-600, 5 mil thickness.

Penetration time has not been determined.

Gloves used for prolonged direct exposure (immersion) should be designated "chemical resistant" as per EN 734 with the resistance codes corresponding to the anticipated use of the material.

Suggested gloves: AnsellPro Viton/Butyl gloves style 38-612, 4/8 mil thickness.

Penetration time has not been determined.

These recommendations may not apply if the material is mixed with any other chemical, or dissolved into a solution. A risk assessment must be performed to ensure the gloves will still offer acceptable protection.

Body Protection

Fire resistant (Nomex) lab coat or coveralls.

Respiratory Protection

Recommended respirators are NIOSH-approved N95 or CEN-approved FFP2 particulate respirators. These are to be only used as a backup to local exhaust ventilation or other engineering controls. If the respirator is the only means of protection, a full-face supplied air respirator must be used.

9. PHYSICAL AND CHEMICAL PROPERTIES

9.1 Information on Basic Physical and Chemical Properties

A) Appearance

No Data Available

C) Odour Threshold

No data available

E) Melting Point/Freezing Point

No Data Available

G) Flash point

No data available

I) Flammability (Solid/Gas)

No data available

K) Vapour Pressure

No data available

M) Relative Density

No data available

O) Partition Coefficient: n-octanol/water

No data available

Q) Decomposition Temperature

No data available

S) Explosive Properties

No data available

B) Odour

No data available

D) pH

No data available

F) Initial Boiling Point/Boiling Range

No data available

H) Evaporation Rate

No data available

J) Upper/Lower Flammability/Explosive Limits

No data available

L) Vapour Density

No data available

N) Solubility

No Data Available

P) Auto-Ignition Temperature

No data available

R) Viscosity

No data available

T) Oxidizing Properties

No data available

9.2 Other Information

no data available

10. STABILITY AND REACTIVITY

10.1 Reactivity

No data available

10.2 Chemical Stability

Stable at recommended storage conditions.

10.3 Possibility of Hazardous Reactions

No data available

10.4 Conditions to Avoid

No data available

10.5 Incompatible Materials

Strong oxidizing agents.

10.6 Hazardous Decomposition Products

No data available

11. TOXICOLOGICAL INFORMATION

11.1 Information on Toxicological Effects

A) Acute Toxicity

No data available

B) Skin Corrosion/Irritation

Moderate skin irritant.

C) Serious Eye Damage/Irritation

Moderate eye irritant.

D) Respiratory or Skin Sensitization

No data available

E) Germ Cell Mutagenicity

No data available

F) Carcinogenicity

Evidence of a carcinogenic effect.

This compound has been designated by the IARC as Group 2B: Possibly carcinogenic to humans.

G) Reproductive Toxicity/Teratogenicity

No data available

H) Single Target Organ Toxicity - Single Exposure

Moderate respiratory tract irritation.

I) Single Target Organ Toxicity - Repeated Exposure

No data available

J) Aspiration Hazard

No data available

K) Potential Health Effects and Routes of Exposure

Inhalation

May be harmful if inhaled. May cause respiratory tract irritation.

Ingestion

Harmful if swallowed.

Skin

May be harmful if absorbed through skin. Causes skin irritation.

Eyes

Causes eye irritation.

L) Signs and Symptoms of Exposure

No data available

To the best of our knowledge, the chemical, physical, and toxicological properties of this material have not been thoroughly investigated.

M) Additional Information

RTECS: PA8050000 (methylene chloride)

12. ECOLOGICAL INFORMATION

12.1 Toxicity

No data available

12.2 Persistence and Degradability

No data available

12.3 Bioaccumulative Potential

No data available

12.4 Mobility in Soil

No data available

12.5 Results of PBT and vPvB Assessment

No data available

12.6 Other Adverse Effects

No data available

13. DISPOSAL CONSIDERATIONS

13.1 Waste Treatment Methods

A) Product

Product may be burned in an incinerator equipped with afterburner and scrubber. Excess and expired materials are to be offered to a licensed hazardous material disposal company. Ensure that all Federal and Local regulations regarding the disposal and destruction of this material are followed.

B) Contaminated Packaging

Dispose of as above.

C) Other Considerations

Product is not to be disposed of in sanitary sewers, storm sewers, or landfills.

14. TRANSPORT INFORMATION

14.1 UN Number

DOT (US): 1593 IATA: 1593 IMDG: 1593 ADR/RID: 1593

14.2 UN Proper Shipping Name

DOT (US)/IATA:

Dichloromethane, solution

IMDG/ARD/RID:

DICHLOROMETHANE, SOLUTION

14.3 Transport Hazard Class(es)

DOT (US): 6.1 IATA: 6.1 IMDG: 6.1 ADR/RID: 6.1

14.4 Packing Group

DOT (US): III IATA: III IMDG: III ADR/RID: III

14.5 Environmental Hazards

DOT (US): None IATA: None IMDG: None ADR/RID: None

14.6 Special Precautions for User

None

15. REGULATORY INFORMATION

This safety data sheet complies with the requirements of WHMIS (Canada), OSHA 1910.1200 (US), and EU Regulation EC No. 1907/2006 (European Union).

15.1 Safety, Health and Environmental Regulations/Legislation Specific for the Substance or Mixture

A) Canada

DSL/NDSL Status: This product or a component of this product is registered on the Canadian DSL/NDSL.

B) United States

TSCA Status: This product or a component is listed on the US EPA TSCA.

C) European Union

ECHA Status: This product or a component is registered with the EU ECHA.

15.2 Chemical Safety Assessment

No data available

16. OTHER INFORMATION

16.1 Revision History

Original Publication Date: 1/14/2015

16.2 List of Abbreviations

LD50	Median lethal dose of a substance required to kill 50% of a test population.
LC50	Medial lethal concentration of a substance required to kill 50% of a test population.
LDLo	Lowest known lethal dose
TDLo	Lowest known toxic dose
IARC	International Agency for Research on Cancer
NTP	National Toxicology Program
RTECS	Registry of Toxic Effects of Chemical Substances

16.3 Further Information

Copyright 2013. Toronto Research Chemicals Inc. Copies may be made for internal use only. The above information is believed to be correct to the best of our knowledge, but is to be only used as a guide. To the best of our knowledge, the chemical, physical, and toxicological properties have not been thoroughly investigated. Please take all due care when handling this product.